



# The Shuttle

*Connecting Through Fiber*

May, 2022

Volume 54

Issue 8

**Weaver's Guild of Kalamazoo, Inc.**  
**[www.weaversguildofkalamazoo.org](http://www.weaversguildofkalamazoo.org)**



**May 11, 2022 WGK, INC.**

**Meeting On Zoom**

6:30 PM SOCIAL TIME

7:00 PM GENERAL MEETING

PRESENTS:

**Karen Donde**

**"Weaving Cloth For Clothes"**

**8 pm Business Meeting:**

2022-2023 WGK, Inc. Elections.

**WGK, INC. MAY MEETING  
ON ZOOM !**

***'Show and Tell' and Shuttle  
Entries due July 1, 2022***

*mipeltz@tds.net*

*Niemi@bloomingdalecom.net*

***Have a blissful Summer!***

*Weavers Guild of Kalamazoo, Inc.*  
*President Letter*

May 2, 2022 W GK, Inc. President's letter

Spring Greetings,

Once again, circumstances to meet in person are beyond our control as The Charles & Lynn Zhang Portage Community Senior Center will not be opening until July. Friday, May 20th @ 11:00 AM will be their Ribbon Cutting Ceremony, 203 East Centre Avenue, Portage MI 49002 for those who would like to attend.

Zoom links via email will be sent out ahead of time for our May 9th last program of the year. 6:30 PM starts off with Show & Tell without a narrative, 7:00 PM Karen Donde, our featured speaker, will discuss "Designing Handwoven Fabric You Can Wear". She is planning to record her program and make it available on YouTube for viewing the following Monday for two weeks. An email link will be sent to access her video. 8:00 PM is our General Meeting with the election for the following unopposed 2022 - 2023 Officers:

President - Kristi Chapman

Vice President - Nancy Thornton

Secretary - Ann Niemi

Treasurer - Shari Glaser

Last though not least, Show & Tell with a Narrative from our Study Group.

May 20th is World Bee Day and I hope you'll consider celebrating by planting *Linum usitatissimum* flax seeds as the flowers are a nectar source for some species of bees. The seeds also have omega - 3, fatty acids, oil and are also a food source for birds as well as us. The harvested stems store the fiber for the making of linen.

My four years of leadership have surprisingly been a welcomed challenge in reawakening skills learned throughout the years of classes, work, being active in the Lawrence Garden Club and the Kalamazoo Bee Club. Thank you so much for your support.

With much appreciation,

Susan Rice, President

## 2020-2021 Officers and Committee Chairs

President – Susan Rice  
 Vice President – vacant  
 Secretary – Ann Niemi  
 Treasurer – Shari Glaser  
 Education – Karen VanderWeele  
 Program/Workshop Coordinator – Susan Rice  
 Scholarship Program – Anne Mehring  
 Shuttle Editor – Ann Niemi  
 Webmaster—Bev Zelewski  
 Yearbook Editor – Terri Feldt  
 Yearbook Fabric – estate donation  
 Service Bureau Coordinator – Kal & Karen VanderWeele  
 Librarian – Kristi Chapman  
 Library Storage – Kristi Chapman  
 Membership – Shari Glasser  
 Mentor Program— available  
 Newcomers/Welcoming –  
 Photographer – Linda Innes  
 Historian/Archivist – Nancy Thornton  
 Hospitality Chair – Cyndee Mishler  
 Equipment Storage/Rental/ Wafa service equipment— Sue Peltz  
 Arts Council Rep – Anne Mehring  
 MLH Rep – Nancy Reile  
 Exemption Committee – Nancy Reile.,

### Hospitality 2021-2022.

**Cyndee you helped make the first meeting  
a Joy!**

Cyndee Mishler.  
Hospitality Chair

**Updated membership form  
on page 15. Please print and  
mail to Shari Glaser, Treasurer,  
at WGK, Inc. P.O. Box 2795,  
Kalamazoo, Michigan**

**49003-2795**

## Study Groups

For more information, contact the study group leader. Karen VanderWeele.

**Four Harness** – Nancy Krapf/Judith Jones—meets second Thursday at 9:30 am at members' homes.

**Moonbeamers** - Helen Lemmer – meets fourth Monday at 7 pm at members' homes.

**Multi-Harness**—Marta Williams – meets third Wednesday at 9:30 am at members' homes.

**Swatch Exchange**— Gail Ross For Guild Year 2020-2021 the Swatch Study Group has decided to take a "year off". Don't worry, we are not dead, just taking a holiday. Instead, we are looking at our guild-wide Towel Exchange as an opportunity to create a large and useful "swatch" (as it were) for guild-wide exchange at next May's meeting--a chance to study a new design, fiber, or color with a full-size "prize" at the end.

**Continuous Strand Weaving**—Lenore Snyder—meets the third Tuesday at the Marshall Public Library, 10:00 - Noon. Contact Lenore Snyder - [lenore@lenorej.com](mailto:lenore@lenorej.com) for information.

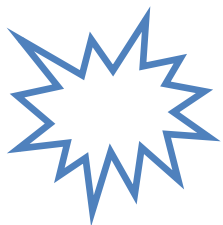
**Spinners on Wheels** : We will be meeting at the Parkview Hills Clubhouse on May 16th from 10-2:00pm. Zoom will not be available for this meeting. At this time, Parkview is only open going east. If you have any questions, please contact Karen VanderWeele or Terri Feldt.

If you would like to join us for the first time, please contact Karen VanderWeele or Terri Feldt for more information. Driving updates will be included with your Zoom invitation. Terri Feldt

**SPIN 2 Weave** TBA

**Membership is required to join a Study Group. . Study Groups offer a richer opportunity to learn and share our fiber interests.**

\*If you have study group news , please notify Ann Niemi Editor for publication of your activity in the Shuttle. [Niemi@bloomingdalecom.net](mailto:Niemi@bloomingdalecom.net)



## Library Corner

Jan Bowen has donated a wonderful book to the guild library. "The Woven Bag" by Noreen Crone-Findlay is a smart combination of weaving with small looms to produce all kinds of marvelous bags. She convinced me that weaving on small looms uses all those bits of special yarn with no waste. And then assembling smaller pieces into any variety of sizes of bags is a lot less scary than cutting up yardage.

Thank you Jan! If you would like to be charmed by this book, just give me a call or an email to arrange a pick-up at my house. I live just around the corner from the Senior Center(s). And, while we're on the subject, you can check out any of our 800+ books, DVDs and magazines from the guild library to keep you going through the summer.

To view our collection, go to the guild website and click on Education. You'll find the link to our online catalog. We have budget to mail you books if a visit to my house isn't convenient.

Small housekeeping note: an extra copy of Handwoven NovDec2020 was dropped off at the library table. If you are missing your own copy, let me know!

Kristi Chapman, Guild Librarian



*Weaver's Guild Programs at a Glance.*

**May 9, 2022 on ZOOM**

6:30 PM Study Group Show & Tell, 7:00 PM General Meeting Karen Donde, "Weaving Cloth For Clothes" followed by Elections.

WGK, Inc. Election of Officers 2022-2023

President; Kristi Chapman

Vice President: Nancy Thornton

Treasurer: Shari Glaser

Secretary: Ann Niemi

## WEAVER'S GUILD OF KALAMAZOO, INC.

## GENERAL MEETING APRIL 11, 2021

Weavers Guild of Kalamazoo  
 General Meeting at Portage Senior Service Center  
 April 11, 2022

Present: Susan Rice, Terri Feldt, Natalie Boyette, Gail Pilgrim, Joanne Johnson, Sue Peltz, Kristi chapman, Kati Meek, Bev Zalewski, Jan Bowen, Cyndee Mishler, Rita Swartz, Linda Innes, Irene Golick, Judi Southwell, Lenore Snyder, Nancy Thornton, Judy Rowe, Shari Glaser, Carol Sanders, Molly Wain, Ann Niemi, Nancy Reile, Nancy Clark, Ursula Ry, Nancy Crampton, Karen VanderWeele, Amanda Casanova, Gail cory Zann, Anne Mearing Jan tucker, Carolyn Woodward, Karen Voight, Susan K, Marcia S, Dottie Goodwin.

WGK, Inc. meeting called to order by President Rice at 7 pm.

**Show and Tell:** Lenore Snyder showed us her continuous weaving shawl and friendship towels. Terri Feldt showed us a mat made with Betty Apeldoorn's yarn.

Susan Rice then introduced **Natalie Boyette** and her lecture on "**What's Next and Why**". We often are faced with feeling overwhelmed or underwhelmed with possibilities and that is the beginning of how a project proceeds. Look who your spirit weaver is. Method, resources, parameters, alone or in a group, connections to nature, warp-weighted, production such as with Annie Albers. What ever makes sense to you and use that as a touch stone to ignite or help you find a path thru challenges This spark returns to you as a spark and honor shaman, priestess, or idol. Think of Niagara Falls what's next- not knowing what's next We are making and discovering at the same time. Exploration, discovery, learning, support from others or linking with others on a similar path is the start of direction.

There are 6 human needs described by Tony Robbins that may help with finding meaning for your weaving project: 1. Certainty- safety, comfort, familiar, 2. Uncertainty- variety, risk, new stuff. 3. Connections- to others to nature, to past or future. 4. Significance- distinction standing out from the crowd, 5. Growth- learning something new, challenge, improving, 6. Contribution- helping, teaching, inspiring. Other needs we must consider are specific situations (event or purpose), available resources- enough time, enough yarn, limitations lack of yarns.

We offer 3 services but can only achieve 2 out of the 3 ever. It can be Good and Cheap, Fast and Good or Cheap and Fast. We put pressure on ourselves to be perfect, fast, and efficient. Just realize there will always be waste.

Being overwhelmed- wanting to do Everything Now, as though we have access to everything all the time overbuying kits, supplies, recipes, shopping vs actual weaving – dangerous such as ideas from Instagram or Pinterest. Remove the burden of expectation and allow self to create. Daryl Lancaster path is she weaves when she is weaving and when she wants to sew, she will sew. Each is a focus in that time.

Process begins- beginnings are hard especially if trying something new. "Myth of Forward Ideas", we all start confused. We find as the process moves forward that we develop opinions, likes, dislikes 'A path'... finding one thing at a time – step by step. Fear of the unknown- if you wait to

## WEAVER'S GUILD OF KALAMAZOO, INC.

**General Meeting April 11, 2021****continued from page 5**

become a better weaver, have compassion, and try not to be great but just keep going. Allow discovery. You are the mystery, you are the detective, you are the scientist, you are the decider. The brain considers detail as if actors on a stage as you think use tools maybe write out colors. Help to visualize. Deal with doubt and panic which are not proof it won't work, only that you are not done thinking. Remember your ego wants to keep to the status quo and create roadblocks. It's tricky, protective, and terrified. Reframe negative messages or limiting beliefs. Answer back with compassion and logic. Progress is nonlinear and messy. Create a check in weekly, daily, or monthly-challenge thoughts about your project. Then realign with why you do this.

Susan thanked Natalie for her presentation and called the Business Meeting top order at 8pm.

**Business Meeting**

**Secretary** March General Meeting minutes accepted with spelling correction. Bev Z. motioned and Marcia S. seconded. Approval.

**Treasurer** Shari G presented the current balances and that the 2022-2023 budget is being developed.

**Education** Karen Van. Asked that if one wants to volunteer at the Scottish Festival (Parchment September 5, 2022 as exhibitor) or Renaissance Fair (Fleisher Field June 18 and 19) to let her know. The Art council has scholarships and grants available.

**Library** Kristi is grateful for books returned and encourages us to make use of the vast library of books and magazines in our library.

**2022-2023 WGK, Inc. Nominations** President- Kristi Chapman, Vice President Nancy Thornton, Treasurer Shari Glaser, Secretary Ann Niemi. Voting to take place on May 11, 2022, on the next scheduled for WGK, Inc. General Meeting.

**Hospitality** Cyndee M asks that items brought in for snacks in our in-person meeting should be individually wrapped. The budget is so small that she will restart the monthly rotation be alphabetically listed for the 2022-2023 meeting years.

Maria Holding's daughter has donated her mom's ceramic buttons to WGK members. We were invited to choose buttons we liked or could use. Whatever is left will be donated to the Art studio/MRC. A thank you card has been left for members to sign and have sent to her family.

**Wafa** scarf rack was brought by Cory Zann and will be donated to KIA. April 30 we will have a yard sale at the Chipman Reserve. Kristi C Sue P and Bev Z will staff the sale of items that include racks and office supplies. Donations accepted.

For sale today is a Lazy Kate from Nancy C and Cyndee offered her 30" 4 shaft loom that is newly reconditioned. She is asking \$1200.

There being no further business the meeting was closed a motion was made by Marcia S and seconded by Anne M and meeting was closed at 8:45PM.

Respectfully Submitted,

Ann Niemi

WGK, Inc. Secretary.

## Weavers Guild of Kalamazoo, Inc. Board Meeting Minutes 4-11-22

Weavers Guild of Kalamazoo

Board mtg via zoom

APRIL 25, 2022

**Present:** Susan Rice, Kristi Chapman, Shari Glaser, Cyndee Mishler, Nancy Reile, Nancy Thornton, Ann Niemi

Meeting called to order at 3:04pm by President Rice.

**Secretary:** Motion to approve minutes from our last meeting by Cyndee and seconded by Karen. And approved.

We will defer any review of by-laws and policies to the next year.2022-2023. Policy questions remain with cost to members for taking workshops. Currently policy states members will pay a \$50 limit. The historical traditions vs 501c (3) regarding paying members for presentations or workshops that is alleged to be based in the nontaxable restraints of the nonprofit status. In recent past members have made paybacks for scholarships. We need to review nonprofit rules and look at how other guilds seem to not follow this rule and still maintain nonprofit status. The 501c (3) status was sought to provide indemnification for board and members.

Portage Senior Service Center will charge for other services beyond the room such as AV and online access is still not understood completely. Susan and Kristi will look at options and costs.

**Treasurer** Shari has been working out the budget but is concerned that we will not be able to meet our costs with the income we can expect in the next year. Income \$125 from note cards \$12 Nokes estate 7.30 Wafa Sale; money sent to money market \$240 in memberships for 2022-2023 year. Expenses for hospitality, post office box programming, hall rental, and \$50 award to MLH. Proposed budget reviewed but until we have an idea of a variety of costs are firm, the budget is still in flux. Our goal is to cover our monthly expenses and may leave WKG, Inc. short by \$1200. Depending on workshops to add to the budget is not a stable option.

2022-2023 Program While we have Susan Conover (Norwegian) in line for a lecture, we do not have all dates filled. With budget limits we may look further to having members be our lecturers in order to reduce cost of travel. Portage Senior Service Center expenses must be clarified before the final budget is ready for approval. Terri Feldt will have yearbook covers cut for 2 years to reduce set up costs. To reach basic costs we would need 29 members. In past we have sent out post cards for a membership drive, now we could use email for reminders or handouts at meetings. We must send 30 day budget notices prior to a vote. So, vote budget in September due to PSC Covid rules, program questions and other costs until PSC opens in July. Shari will draft a budget to present to members in May and vote in September motion made by Shari, seconded by Cyndee.

**MLH Biennial** Exhibition at Lowell Arts Gallery is open May 14-June 25. Reception May 26 6-8 pm. Judge will be present, admission is free. MLH workshops are set with 50 participants (80 is usual). Ability weavers is also in Lowell. They sell yarns as well as woven items made in house.

**Education** Re: Scottish festival volunteers. September 10, 2022Karen warped the loom to demonstrate.

If anyone wants to go as a vendor call 989-464-6754 or [greyfur.kt@gmail.com](mailto:greyfur.kt@gmail.com). Renaissance Fair will showcase a mini-Viking Village sale opportunity as vendor Karen and Kal will have booth which they have purchased. Otherwise, entry only as a guest and must be in costume (Viking to 1901).

Continued on Page 8

## Weavers Guild of Kalamazoo, Inc. Board Meeting Minutes 4-11-22 continued from page 7

**Library** Purchase of Kitchen Dyeing book by Megan Williams is in the next budget year. She has the billing for the cost of Twist subscription to send in.

Wafa Sale at Chipman Reserve notices on Facebook and Gretchen has chosen items out of the Wafa lot. Notices are on Facebook, Baker Studio, Great Northern, KIA, MLH sale page, Nature center etc.. More items will be brought from storage from Wafa storage. PSC wants the large coffee pot.

**Garage sale** Sue Peltz and Shari G have developed plans to address what is left from Wafa items. This will not be advertised as a WGK, Inc. event. Nancy R and Nancy T will assist with WGK equipment.

**Shuttle** New feature from Gail Pilgrim starting in full next year.

May 11 meeting Study group Show and Tell before meeting 6:30 to 7 PM. As a video.

Karen Donde is scheduled for Zoom meeting May 11, 2022.

Update membership forms for 2022-2023 headers Membership form is fillable but does not open from the Shuttle.

Tasks: Bev needs sale update

HGA Convergence July Knoxville Tennessee

Next Board meeting TBA

Close meeting motion made by Nancy R and seconded by Nancy T. Approved meeting closed 4:35pm

Respectfully Submitted,

Ann Niemi

## Wafa News

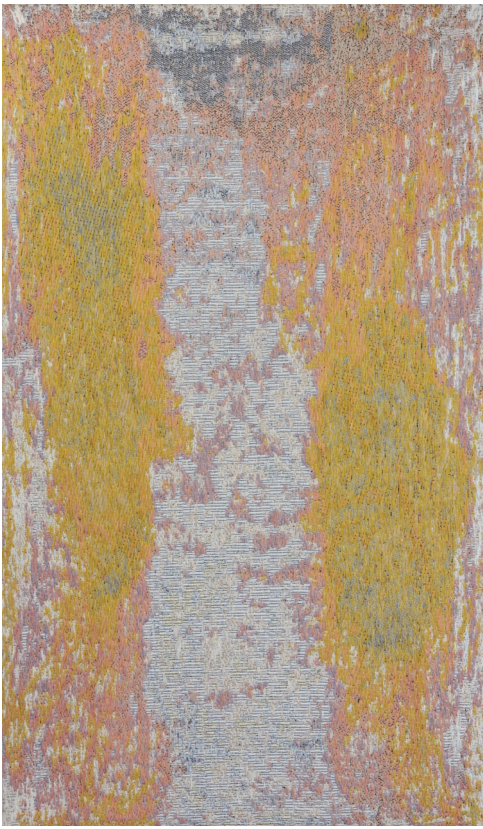


A big congratulations to the team of cheerful, hard-working volunteers who cleared the Wafa sale display equipment out of storage. With many hands and just enough customers, we found new homes for almost all the racks and bins of 'stuff.' Nice job SusanR, NancyT, SueP, Jills, JanB, and NancyR! There were a few remnants that will be trotted out at future guild meetings, or possibly the 'yard sale' next September. It was almost like a quilting bee where we all got caught up on conversation and events.

-With gratitude, Kristi Chapman, now-retired Wafa gear Sherpa







## Michigan Weaver ART SHOW!!!!!!

Cathryn Amidei Signals from Noise

New Tapestries April 27 - June 4, 2022

Opening Reception: Friday April 29, 2022, 7-9 pm

WSG Gallery is pleased to present Signals from Noise, an exhibition celebrating the newest works by artist Cathryn Amidei.

An opening reception for the artist will be held at the gallery on Friday evening

April 29, 2022 from 7-9 pm.

I also sit at the gallery every Wednesday - if coming to the reception is not possible.

I'd love to see you there!

Gallery : <https://www.wsg-art.com/gallery-events/cathrynamidei2022>



**MAY 14 - JUNE 25**

## **MICHIGAN LEAGUE OF HANDWEAVERS 21ST BIENNIAL EXHIBITION**

**AT THE LOWELLARTS GALLERY**

**223 W MAIN ST | LOWELL, MI | 49331**

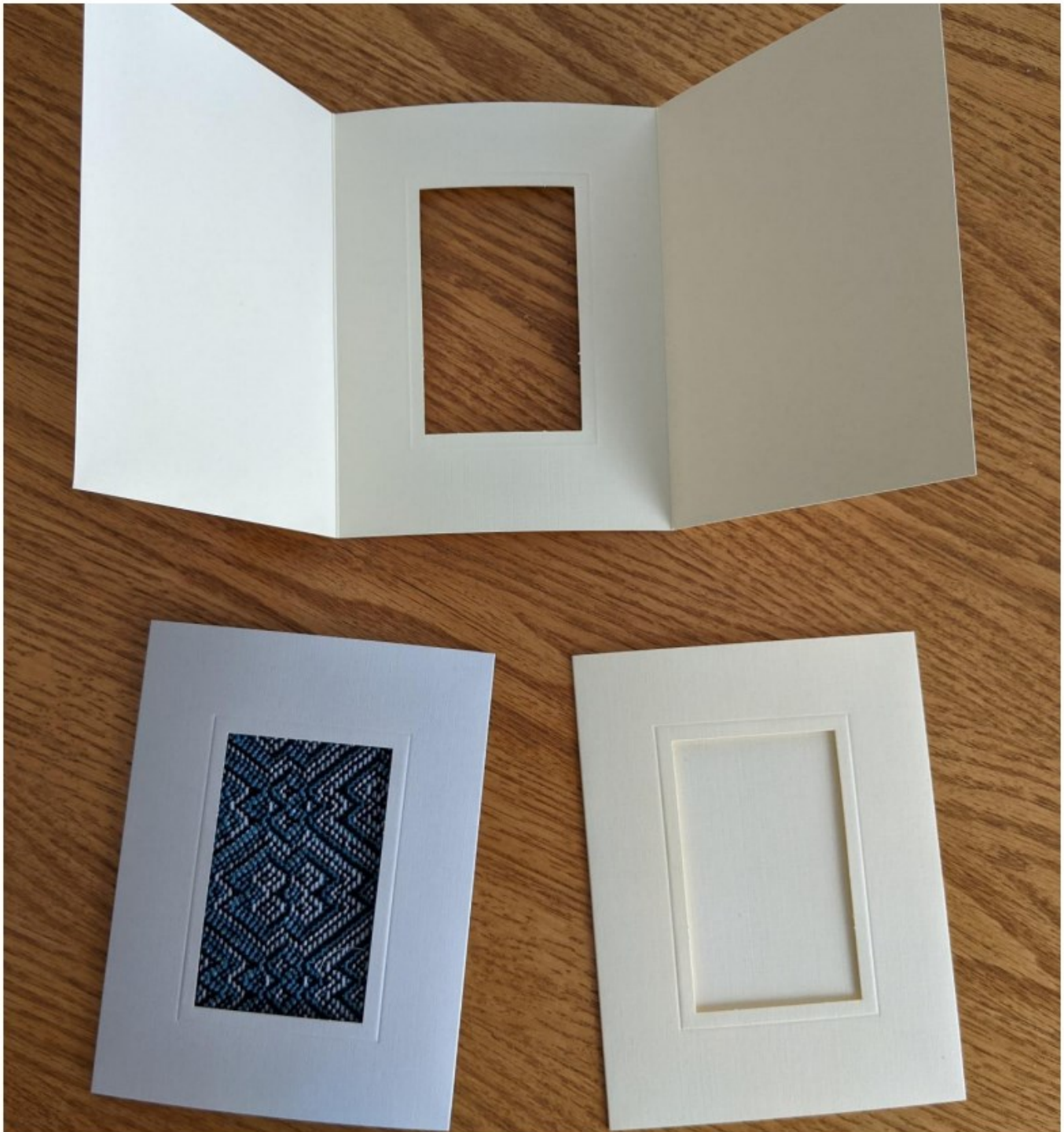
**HOURS: TUES - FRI 10AM-6PM, SAT 12-5PM**

**LOWELLARTSMI.ORG**

lowell **Arts**

## Notecard blanks

The guild has notecard blanks with die-cut openings. The cards are 4-1/4 by 5-1/2 inches. The cut-out openings are 2 by 3-1/8 inches. Attach your woven fabric, knitting, or felting behind the opening and you have a customized notecard to show off your work. Blanks are available in gray and ivory high-quality paper with matching envelopes. Cost is \$7.50 for a pack of ten. Contact Kristi Chapman to arrange purchase and delivery.



# MLH Lecture Series List of Presenters

April 13 at 7pm ***“Basketry”*** with Judy Dominic

Judy will discuss her love of basketry and its influence on most of her fiber work over the past forty years.

May 11 at 7pm ***“Weaving by Design”*** with Kelly Marshall

Kelly Marshall will give a broad spectrum talk on design, rep weave, and the development of a weaving business.

**We will take a break for June as we focus on the Summer Workshops at Hope College.**

July 13 at 7pm ***“Woven Worlds: Structure, Science & Metaphors”*** with Rachel Hefferan

Rachel will walk us through her journey as a weaver over the past five years. She will describe the ways in which microbiology, brewing beer, changing landscapes, and health, led her to making the work she is now.

August 10 at 7pm ***“History of Weaving in Hartland, MI”*** with Nadine Cloutier

She will discuss the rich history of Cromaine Crafts during the 1930-40s, the looms built here, the birthplace of both the first National Weaving Institute Conference in 1938 and the Michigan League of Handweavers at Waldenwoods in 1959, and the philanthropist who made it happen.

September 14 at 7pm ***“Cultivating a Plant Based Art Practice”*** with Kayla Powers

Kayla is a weaver and natural dyer living and working in Detroit. Her work is focused on local, natural color from plants foraged around the city and her own dye garden. She is currently working on the completion of her MFA at Cranbrook.

October 12 at 7pm ***“An Introduction to Scandinavian Coverlets & Sleigh Blankets”*** with Susan Conover

Susan’s fascination with Scandinavian weaving is apparent in everything that is created on her looms. The Swedes traditionally weave a structure called Smalandsvav (a multi-harness weave) and the Norwegians call it Skillbragd. She explored mounting these unique hand-woven pieces onto sheep skins to create warm and cozy bed coverings or sleigh blankets.

November 9 at 7pm ***“Pin Loom Weaving; discovering one of the most popular unknown weaving techniques ever.”*** with Margaret Stump

This introductory presentation covers the background of pin loom weaving, an introduction to the pin loom weaving process, a demonstration of weaving a two inch pin loom square as well as lots of examples of what you can make using a pin loom.

December 14 at 7pm ***“Throw in the Towel”*** with Gail Pilgrim Ross

Kitchen Towels (aka Dish Towels, Tea Towels, Bar Towels, Glass Towels) are the workhorses of the weaving world. By popular opinion they are the most often woven project and not only fulfill a practical functional role, but also make happily received gifts and highly successful sale items. But why weave towels when big box stores can sell them in great quantity at a fraction of the cost of materials, not to mention our time?



Handweavers Guild  
of America, Inc.

## Textiles & Tea

The Handweavers Guild of America, Inc.'s (HGA) exciting new program for 2021, Textiles & Tea, takes place every Tuesday at 4 PM (ET). We've invited some of the most respected fiber artists in the field today to join us for an hour long conversation where we will discuss their artwork and their creative journey. Make a cup of your favorite tea and join us as we talk about fiber, creativity, inspiration, process and so much

### May 10, 2022: Rabbit Goody

*generously sponsored by [Heddlecraft](#)*

[Register](#)



[Rabbit Goody](#) knew how to weave from the very beginning, as if from some past life, or like someone who can pick up a musical instrument and play without thinking about it. She started weaving when she was in her late teens, without any real instruction, but it came very naturally to her. Her curiosity and interest in hand and early power technology was something that she developed throughout high school and college. The understanding of process - how things come into being - is the guiding question in all her work. After working for many years at the Farmers' Museum in Cooperstown, NY as the head of Domestic Arts and as Assistant Curator for Textiles, she established the mill which has been producing fabrics for over 26 years. She has spent a great deal of time studying historic textiles in museum collections because being a curator has given her access to many, many collections. She has studied weavers' draft books and has learned to read the weavers' recipes and receipts from the past so that she can recreate textiles that have not been seen for hundreds of years. In addition to historic patterns, she designs very modern textiles that look as if they were hand woven but are in fact woven on our power looms.

## May 17, 2022: Abraham Buddish

*generously sponsored by [Suanne Pasquarella](#), supporting weavers of the future*

[Register](#)



[Abraham Buddish](#) is a fiber artist, craftsman, and professional Textile Designer. He began his fiber journey at age eight after receiving an Angora goat. His fascination with fiber, animals, and textile techniques flourished throughout his childhood and he found community in the Weavers Guild of Greater Kansas City. Abraham received a BFA in Crafts with an emphasis in Fiber and Textile Design from the College for Creative Studies, Detroit, MI. Abraham works for Brentano inc. (upholstery, drapery, & wallcovering) in Wheeling, IL and with help from his parents maintains a herd of fiber goats and sheep in Kansas. His artwork often explores the many qualities related to the human experience and aims to portray narratives involving the physical and spiritual being. He has had the privilege to showcase his artwork on the national and international levels.

## May 24, 2022: David Heustess

*generously sponsored by [Crafty Housewife Yarns](#)*

[Register](#)



[David Heustess](#) is an artist and arts educator in Nashville, TN, and his work makes use of clay, fiber arts, and beadwork. After many years of working as a modern dancer/teacher, David began pursuing his interest in pottery and other art mediums. He attended the Appalachian Center for Crafts and in 1995 he earned a BFA degree with studio concentrations in clay and fiber arts. Currently, David directs a gallery space and a community arts education program (Sarratt Art Studios) at Vanderbilt University. Fall 2021 will mark David's 25th year of working for Vanderbilt. His passion for teaching and his love for making artwork has allowed him the opportunity to share a variety of mediums with students from all parts of the Nashville community. David is treasurer/membership director for the Handweavers Guild of Nashville and the Director of Exhibitions for the American Tapestry Alliance.

## May 31, 2022: Mary Berry

generously sponsored by [Spokane Handweavers Guild](#)

[Register](#)



Mary Berry is the Owner and Resident Teacher at the Fancy Fibers Fiber Arts Center in northeast Texas. Formerly a middle school teacher, she now teaches weaving, spinning, dyeing, rug hooking, and rug punch in her own shop and at fiber festivals nationwide. Her Fiber Arts Center sells supplies and equipment for the crafts she teaches, as well as spinning fiber from the Shetland sheep, Angora goats and Suri alpacas that she raised for 12 years. For Mary, every day is an opportunity to create something beautiful.

### ***The Yearbook Deadline***

The deadline for paying your dues, in order to be included in the 2022-23 Yearbook, is July 31, 2022.

Yearbooks will be distributed at the September General Meeting on September 12, 2022.

Terri Feldt

WGK, Inc. YearBook Editor

WGK, Inc. Membership form is on page 16.

Please complete and mail to WGK, Inc. P.O. Box 2795,  
Kalamazoo, MI 49003-2795

# Weavers Guild of Kalamazoo, Inc. 2022-2023 Membership Form

**Official Use Only**

Date Received \_\_\_\_\_

Cash or Check # \_\_\_\_\_

\_\_\_\_\_ *NEW*      \_\_\_\_\_ *RENEWING*

**Annual Dues \$40.00**  
*- Dues cover 1 year from June 1 to May 31 the following year*

**Payable to: Weavers Guild of Kalamazoo**  
**P.O. Box 2795**  
**Kalamazoo, MI 49003-2795**

**Name:** \_\_\_\_\_ **Telephone:** \_\_\_\_\_

**Address:** \_\_\_\_\_ **Work Telephone:** \_\_\_\_\_

**City:** \_\_\_\_\_ **State:** \_\_\_\_\_ **Zip:** \_\_\_\_\_

**E-mail Address:** \_\_\_\_\_  
*(This is used to send you the current Shuttle, as well as other Guild news and items of fiber interest)*

**If you are a Member Business Owner, indicate business name, contact information and product:** \_\_\_\_\_

Indicate if you would be willing to volunteer to serve, if needed, in any of the capacities listed below:

- |                                   |                                |                          |
|-----------------------------------|--------------------------------|--------------------------|
| ___ Program Committee             | ___ Workshop Setup             | ___ Board Position       |
| ___ Nominating Committee          | ___ Library Committee          | ___ Speaker Hospitality  |
| ___ Publicity/Community Awareness | ___ Miscellaneous volunteering | ___ willing to be called |

\_\_\_ Present Program/Workshop: \_\_\_\_\_

\_\_\_ Demonstrate/Teach: \_\_\_\_\_

\_\_\_ Do Commissions: \_\_\_\_\_

**Program Suggestions:** \_\_\_\_\_

**I wish to have a mentor in the following areas:** \_\_\_\_\_

**I wish to serve as a mentor in:** \_\_\_\_\_

**I have the following equipment (make, description):**

**Looms:** \_\_\_\_\_ **Spinning Wheels:** \_\_\_\_\_

**Weaving design software:** \_\_\_\_\_ **Others:** \_\_\_\_\_

I hereby give \_\_\_ do not give \_\_\_ The Weavers Guild of Kalamazoo, Inc. permission to use photographs of

\_\_\_\_\_ Me or \_\_\_\_\_ My work in:

\_\_\_ historical files    \_\_\_ publicity in printed matter (magazines, newspapers)    \_\_\_ Guild web site

\_\_\_\_\_  
*Signature and date*

*Permission can be revoked with a signed and dated note sent to the Weavers Guild of Kalamazoo address provided above.*

**Harrisville Designs 36" floor loom, 4 harness, 6 treadle, good condition, \$400**  
**Owned by Lori Evesque, in Allegan, MI**  
**I haven't used the loom in over 5 years and before I got another loom, I did replace the harness cables.**

**The metal rod connected to the back beam needs replacing. (Can't remember the name for this part)**

(can be replaced for <\$10 at hardware stores)

Does not include any reeds or bench

To inquire: [evesquelori@gmail.com](mailto:evesquelori@gmail.com) or 269-808-6402 (email preferred)



**Louet S10 Spinning Wheel-used**

For Sale \$350.

If new sells for between \$800-900  
 Single treadle Louet spinning wheel in good condition

Irish tension

3 standard bobbins

Lazy kate rack

Standard flyer with hooks

Sturdily constructed of lacquered solid birch and beech

Perfect for spinning with newcomer or experienced spinner

Easy to learn to spin on this spinning wheel  
 Very suitable to produce both thick and thin and artsy yarns



**Bernadette Buechler**

**269-366-2124**

**6602 Evergreen Street**

**Portage, MI 49024**



## Maple 4 Harness Counter Balance Loom

Lovely Maple 4 Harness Counter Balance Loom for sale. Direct tie-up. 20" weaving width. Compact size is perfect for apartment or small studio. Ideal for the new weaver as well as experienced weavers. Most of the wood used in this loom is birds eye maple. Charmingly crafted horses, smooth pulleys. Very sturdy. Comes with 2 reeds, an 8 dent and a 12 dent. Plenty of new inserted-eye wire heddles. Comes with accessories - tool pocket to attach to side of loom, lease sticks, sley hook. Warp beam is set up for warp-board measured warp, but can be adapted to for sectional warping. Cloth beam has canvas apron. Chain tie-ups ensure consistent shed. No need to take this loom apart to move, fits through doorways easily. Moves without difficulty in the back of an SUV, mini-van, or some hatch-backs. Built before 1963 and sold through the Dixie Hobby Shop, Lincoln Park, MI. I believe this loom was made in Michigan. Great find! Local pick-up only. \$500 Accepting cash or Venmo.

Miranda Howard



## Glimakra Standard Loom, Counter-march, 100 cm wide

Beautiful Glimakra Counter-march loom, 10 harnesses and 10 treadles, 100 cm weaving width. Sturdy and reliable. Includes 2 dozen warp sticks, fabric protector, lease sticks, extra warp tie on bars for cloth and warp beams, 12 dent stainless steel and 20 dent carbon steel reeds, sley hook, 2 reed hooks, hammer, horses and balance devices to make it a counter balance loom, testsolv heddles (LOADS) and tie-up system, tie-up diagrams, hammer, original gum feet, heavy cotton twill aprons on warp and cloth beams, replacement break handle, adjustable bench. Loom measures 52" wide, 69" tall, and 62" deep. This is a used loom, a real work-horse. It still has a lot of weaving left in it. Please mouse over the images to examine condition. I accept credit cards, cash, and Venmo. Discount for cash and Venmo. Local pick-up only in Kalamazoo, MI. \$1250

Miranda Howard  
269-532-9700  
[randiloo@gmail.com](mailto:randiloo@gmail.com)  
Kalamazoo, MI





**Glimakra Counter  
March Loom  
60 inch / 8 harness  
(Need to disassemble  
to move)  
\$2,250 (or best offer)  
Contact Jim Schafer  
(616) 550-3114**



**Nilus Leclerc Counter Bal-  
ance Loom  
45 inch / 4 harness  
\$700 (or best offer)  
Contact Jim Schafer (616) 550-  
3114**

**SOLD**